



D28 CC TECHNICAL SPECIFICATIONS

D28CC



Length overall	8,25 m
Hull length	7,90 m
Beam	2,60 m
Draft - hull	0,41 m
Light Displacement	2250 kg
Fuel capacity	340 L
Fresh water capacity	80 L*
Black water capacity	30 L *
Minimum engine	200 HP
Maximum engine	400 HP
Top speed range	32 - 50 knot
Cabins	-
Berth	-
Max people on board	7 / 9
Design category	CE Cat. B / C
Hull	Twin stepped deep-V
Hull design	Adam Younger Design
Design by	Dromeas Design Studio
Engineering by	Dromeas Engineering



Optional Equipment are mentioned with an Asterix, *.



STANDARD EQUIPMENT

CONSTRUCTION

HULL & DECK

White gelcoat hull & deck
 Vinylester skincoat
 Vinylester infused PVC foam-cored sandwich GRP hull & deck
 Vinylester infused PVC foam-cored sandwich GRP bulkheads
 Closed cell PU formed GRP structure
 Vinylester infused structural construction

DECK GEAR

Heavy duty rub rail
 Self draining cockpit
 Non-skid decking
 Trailer winch ring
 Self draining anchor locker
 Stainless steel bow roller
 2 forward stainless steel mooring cleats
 2 midship stainless steel cleats
 2 aft stainless steel mooring cleats
 Stainless steel pulpit
 Swimming platform
 Folding swim ladder
 Storage lockers under the cockpit floor

COCKPIT & DECK

Carbon-fibre T-Top with LED lighting
 Storage under forward cockpit seating
 Aft folding cockpit bench
 Aft deck starboard folding bench
 Aft deck port folding bench
 Rod holders on side decks - 2

HELM STATION

Integrated performance console
 Dashboard with engine control & space for nav. station
 Electrical instrument switches
 Pilot and co-pilot seats
 Compass
 Horn
 Fuel gauges
 Cupholders
 Console hand rails
 12V & USB outlet

COCKPIT WETBAR

Cockpit wetbar
 Stainless steel sink and tap
 Storage (optional fridge space)
 Storage spaces

INTERIOR

Opening porthole in console

HEAD

Access from console
 Opening deck hatch
 Sink and tap with fresh water option
 Shower (with fresh water option)
 Mirror
 Storage spaces
 Ceiling LED lights
 Access to technical areas

MECHANICAL EQUIPMENT

Hydraulic steering with adjustable Dromeast steering wheel
 Stainless steel fixed fuel tank with deck fillers
 Electrical & manual bilge pumps

ELECTRICAL SYSTEMS & LIGHTING

Start battery, 1 x 110 Ah incl. with engine
 Service battery, 1 x 110 Ah
 Electrical systems control panel
 Navigation lights
 Interior indirect LED lighting



OPTIONS

DECK GEAR

Electrical windlass with remote control
Stainless steel deck hand rails
Additional swim ladder with grab rails

EXTERIOR COMFORT

T-Top stainless steel roll bar
T-Top aft arch with 4 rod holders
Aft cockpit L bench (instead of folding seating on port)
Removable aft cockpit table with conversion to sunbed (requires both benches for sunbed conversion)
SeaDek decking on cockpit floor & swim platform
Teak decking on cockpit floor & swim platform
Esthec decking on cockpit floor, side decks & swim platform
Aft cockpit removable tent (incl. carbon fibre poles)
Removable foredeck tent (incl. carbon fibre poles)
Removable folding cockpit table with conversion to sunbed - forward
Rod holders on side decks - 4
Oxygenated live well - requires wetbar
Outriggers
Sea water pump for deck wash
Waterski pole

COCKPIT WETBAR

Refrigerator - 40L
Additional refrigerator - 40L
Single gas hob
Electrical grill, 220V - requires inverter

HEAD

Optional manual toilet with seawater system with 30L holding tank & deck pump-out
Upgrade to electrical toilet with seawater system with 30L holding tank & deck pump-out

MECHANICAL EQUIPMENT

Bow thruster
Trim tabs
Fresh water system in head and wetbar sink and tap with 80 Liter tank and stainless steel deck filler
Cockpit shower - requires fresh water system
Hot water system, 220V
Offshore fuel tank, upgrade to 450 Lt.
Seakeeper stabilization system

ELECTRICAL SYSTEMS & LIGHTING

Additional 12V battery
Chain counter
Search light
Shore power connection 220V & Battery charger (25A)
Cockpit LED courtesy lights
Solar Energy Pack, 1 x 100W
Underwater lights
Inverter, 750W

NAVIGATION SYSTEMS

Navigation Package 1 - GARMIN GPSMAP 922 - 1 x 9" MFD
Chartplotter, Transducer, Navionics Map Package, VHF 115i
Navigation Package 2 - GARMIN GPSMAP 1222 - 1 x 12" MFD
Chartplotter, Transducer, Navionics Map Package, VHF 115i
VHF - GARMIN 115i
Transducer - Depth & temperature
GARMIN GPSMAP 922 - 1 x 9" MFD Chartplotter
GARMIN GPSMAP 1222 - 1 x 12" MFD Chartplotter
GARMIN GPSMAP 922 - 2 x 9" MFD - Chartplotter
GARMIN GPSMAP 922 - 2 x 12" MFD - Chartplotter
GARMIN Radar GMR 18 HD+
GARMIN Fishfinder T 1500W CHIRP Sonar Module

ENTERTAINMENT SYSTEMS

Fusion Marine Stereo Sound System, Control Unit RA70 with bluetooth & 2 speakers
Fusion Sound System Upgrade 1 - additional 2 speakers (requires Fusion Sound System)
Fusion Sound System Upgrade 2 - 5 ch. Amplifier & subwoofer (requires Fusion system & Fusion upgrade 1)

COVERS

Canopy closing under T-Top
Winter cover
Aft cockpit cover
Forward cockpit cover
Wetbar cover
Console cover

ANCHORING & MOORING

Anchoring Kit - 6 kg galvanized Delta type anchor & 6 mm. 30 m. galvanized calibrated chain
Mooring Kit - 4 x 10 M 14 mm ropes for docking, 4 Dromeas Yachts fenders

TRANSPORT & DELIVERY

Shrink wrapping & shipping cradle
Antifouling Paint

ENGINE OPTIONS

Mercury FourStroke 1 x 250 HP V8 - XXL - with VV 502 5" Multi Display
Mercury FourStroke 1 x 300 HP V8 - XXL - with VV 502 5" Multi Display
Mercury FourStroke 2 x 200 HP V6 - XL
Mercury Verado 2 x 250 HP V8 - XL



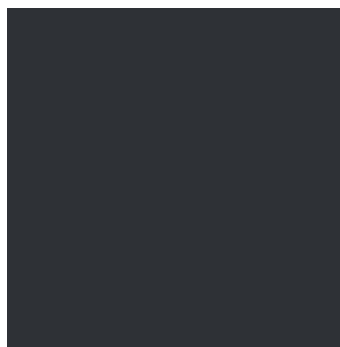
HULL COLOUR SELECTION

Pure White (Standard)
RAL 9010

Military Light Gray
RAL 7030

Anthracite Gray
RAL 7011

Fisherman's Blue
RAL 5026



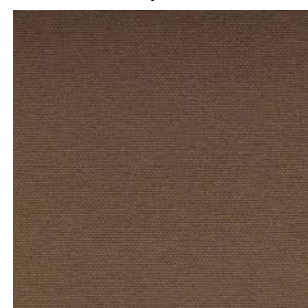
SILVERTEX UPHOLSTERY SELECTION

Titanium

Mandarin

Jet

Taupe



Transport, crane costs & boat launch preparations are not included. The presented models are not binding. Dromeas Yachts reserves the right to change the prices and the equipment without prior information, as well as the technical data our models. The performance of the boat vary on the equipment installed. All taxes, registration, customs, marina and etc costs are customers' responsibility. All rights reserved. Dromeas Yachts 2021